

# BIOCARBON<sup>®</sup> LAMINATES

• BREATHING SUSTAINABILITY •



## WASHROOM & LOCKER COLLECTION

# CARBON NEUTRAL HIGH PRESSURE AND SOLID GRADE LAMINATES

Taking steps to reduce your carbon footprint

# WASHROOM & LOCKER COLLECTION

The Washroom and Locker range provides a collection of HPL, SGL and Liscio which are suitable for cubicles, vanity units, wall panelling and many other interior applications.

## Key features of the BioCarbon Laminate range

### High Pressure Laminates:



Carbon Neutral



Fire Performance



Anti-Bacterial and  
Anti-Microbial  
Protection



Easy to clean



Formable

### Solid Grade Laminates:



Carbon Neutral



Fire Performance



Anti-Bacterial and  
Anti-Microbial  
Protection



Easy to clean



High Resistance  
to Impact



Moisture Resistant

### Liscio:



Carbon Neutral



Fire Performance



Healing  
Properties



Low Light



Anti-fingerprint



Soft Touch

■ Standard Feature

## A new range of laminates with built-in environmental protection

We are proud to introduce the first carbon neutral laminates to be supplied to the UK and Ireland, enabling you to make a positive choice for the environment with no adverse impact on quality or performance.

BioCarbon Laminates are unique and add carbon neutral credentials to high quality, cost effective, and durable decorative materials. Our laminates deliver the benefits of being carbon neutral without a premium price tag. All products conform to CE mark standards of health and safety, make use of sustainable raw materials and are available as FSC® certified\* materials.

As an ethical brand which takes the net zero challenge seriously, BioCarbon Laminates provide EPD credentials which transparently communicate the environmental impact of the material over its life cycle.

Being able to meet the goal of net zero greenhouse gas emissions assists our clients in supporting global environmental considerations alongside innovative and future-proof design solutions and all with a competitive edge.

Our laminates are produced in a carbon neutral manufacturing facility which monitors, controls and balances carbon emissions, reducing them to zero.

We do this by:



Engaging in carbon off-setting through the use of renewables including hydroelectric power



Exchanging VOC-emitting resin for a water-based alternative



Countering CO<sub>2</sub> emissions with a reforestation tree-planting programme

# COLOUR MATCHES AND LRVs

CODE	DECOR	BS	RAL DESIGN*	NCS	PANTONE	LRV
BC115	Arctic White	22 C 31	310 90 05	S 0300-N	-	83.54
BC129	Egyptian White	00 E 55	095 93 05	S 0603-G80Y	-	82.76
BC142	Antique White	08 B 15	085 90 10	S 0804-Y10R	-	79.26
BC153	Truffle	00-A-03	060 80 10	S 1005-Y50R	4755 C	45.02
BC223	Jet	08 A 14	000 15 00	S 8502-G	426 C	1.61
BC229	Graphite	00 A 13	000 35 00	S 7005-R80B	2336 C	5.6
BC259	Elegant Grey	02 A 07	000 65 00	S 3502-B	422 C	33.59
BC264	Classic Grey	00 A 05	000 75 00	S 2502-G	421 C	45.93
BC278	Luna Grey	00 A 01	000 85 00	S 1502-R	420 C	61.34
BC312	Andesite	-	-	-	-	min: 2.96 max: 4.01 average: 3.57
BC342	Gabbro	-	-	-	-	min: 11.01 max: 12.57 average: 12.02
BC369	Diamond Quartz	-	-	-	-	min: 45.45 max: 50.99 average: 48.96
BC394	Alluminio	-	-	-	-	42.56
BC425	Azure	20-E-56	270 30 45	S 4050-R80B	7686 C	5.86
BC442	Cobalt	20-E-53	260 40 40	S 3560-R90B	2386 C	10.47
BC466	Crimson	04 E 56	030 50 60	S 1080-Y90R	186 C	11.17
BC469	Orange	06-E-55	050 60 70	S 1070-Y50R	2024 C	25.15
BC478	Tropical	0-003	080 80 90	S 1060-Y10R	1225 C	50.94
BC499	Lime	0-008	110 80 50	S 1060-G70Y	382 C	53.99
BC501	Carmine	04 C 37	020 60 20	S 3020-R10B	500 C	22.5
BC529	Ballerina	04 E 49	040 90 10	S 0515-R	705 C	73.8
BC551	Sage	18-D-43	160 60 10	S 3010-G	5575 C	27.36
BC559	Atoll	18-D-41	210 80 15	S 1020-B50G	7464 C	47.58
BC584	Sky	20 D 41	260 70 20	S 2030-R90	644 C	49.5
BC620	Bog Oak	-	-	-	-	7.73
BC627	Smoked Oak	-	-	-	-	min: 8.81 max: 10.02 average: 9.38
BC646	Royal Walnut	-	-	-	-	min: 5.72 max: 6.79 average: 6.36
BC670	English Oak	-	-	-	-	min: 6.78 max: 8.13 average: 7.61
BC688	Country Oak	-	-	-	-	30.4
BC690	Sawn Maple	-	-	-	-	min: 36.66 max: 39.31 average: 37.98
BC693	Washed Oak	-	-	-	-	44.64
BC709	Nero	08 A 14	000 25 00	S 8000-N	433 C	4.3
BC737	Carbone	00 A 13	000 40 00	S 6502-B	Cool Grey 10	11.2
BC762	Fuma	00 A 03	000 80 00	S 1502-G50Y	Cool Grey 2	59.5
BC799	Bianca	00 E 55	110 96 02	S 0300-N	-	93

To order samples please contact our UK distributor Performance Panels Ltd.

By telephone: +44 (0) 1422 310319

By email: [info@performance-panels.co.uk](mailto:info@performance-panels.co.uk)

Online: [www.performance-panels.co.uk](http://www.performance-panels.co.uk)

The BS, RAL Design, NCS and Pantone references are the nearest equivalents and the LRV values have been measured in our testing laboratories and should be used for guidance only. We recommend decors should be verified visually by requesting a sample(s) to ensure true colour match to your project requirements.

\*RAL Classic is available upon request.

# COLOUR CHART

Available in **W** Washroom and **L** Locker collections.



Arctic White | ES  
BC115

**W**  
HPL/SGL



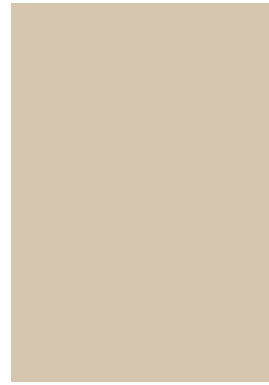
Egyptian White | ES  
BC129

**W L**  
HPL/SGL



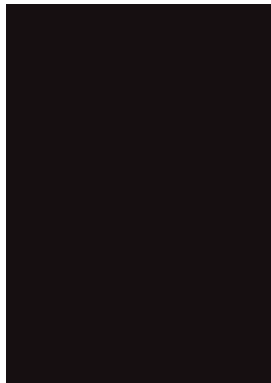
Antique White | ES  
BC142

**W**  
HPL/SGL



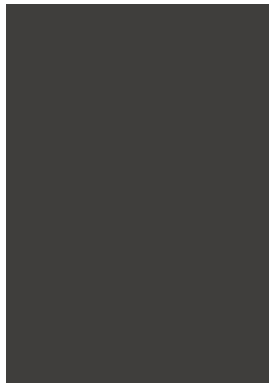
Truffle | ES  
BC153

**W**  
HPL/SGL



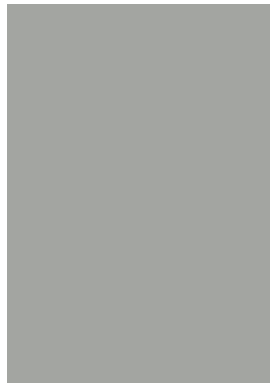
Jet | ES  
BC223

**W L**  
HPL/SGL



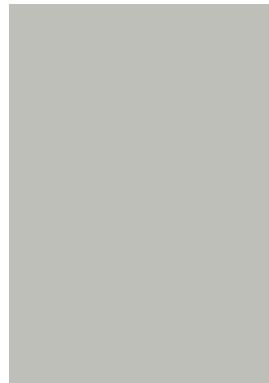
Graphite | ES  
BC229

**W L**  
HPL/SGL



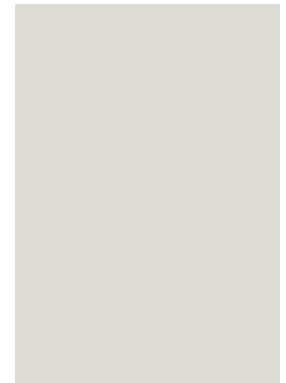
Elegant Grey | ES  
BC259

**W**  
HPL/SGL



Classic Grey | ES  
BC264

**W L**  
HPL/SGL



Luna Grey | ES  
BC278

**W**  
HPL/SGL



Andesite | ES  
BC312

**W**  
HPL/SGL



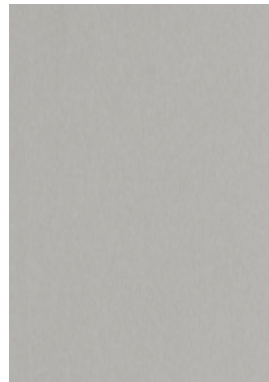
Gabbro | ES  
BC342

**W**  
HPL/SGL



Diamond Quartz | ES  
BC369

**W**  
HPL/SGL



Alluminio | ES  
BC394

**W**  
HPL/SGL



Azure | ES  
BC425

**W**  
HPL/SGL



Crimson | ES  
BC466

**W L**  
HPL/SGL



Orange | ES  
BC469

**W**  
HPL/SGL



Tropical | ES  
BC478

**W L**  
HPL/SGL



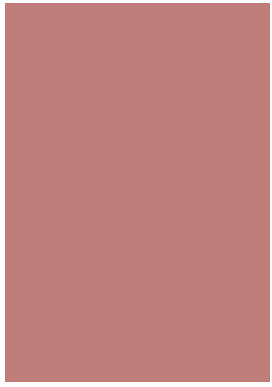
Lime | ES  
BC499

**W L**  
HPL/SGL



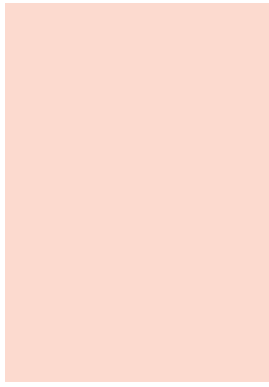
Cobalt | ES  
BC442

**W L**  
HPL/SGL



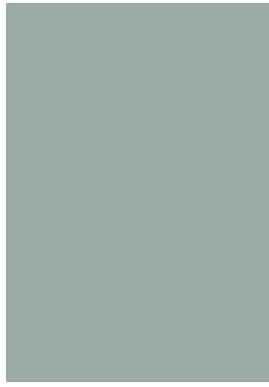
Carmine | ES  
BC501

**W**  
HPL/SGL



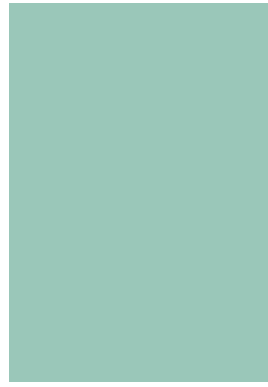
Ballerina | ES  
BC529

**W**  
HPL/SGL



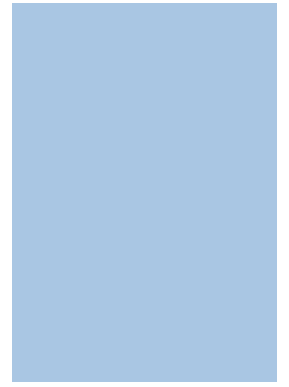
Sage | ES  
BC551

**W**  
HPL/SGL



Atoll | ES  
BC559

**W L**  
HPL/SGL



Sky | ES  
BC584

**W**  
HPL/SGL



Bog Oak | ES  
BC620

**W**  
HPL/SGL



Smoked Oak | ES  
BC627

**W**  
HPL/SGL



Royal Walnut | ES  
BC646

**W**  
HPL/SGL



English Oak | ES  
BC670

**W L**  
HPL/SGL



Country Oak | ES  
BC688

**W**  
HPL/SGL



Sawn Maple | ES  
BC690

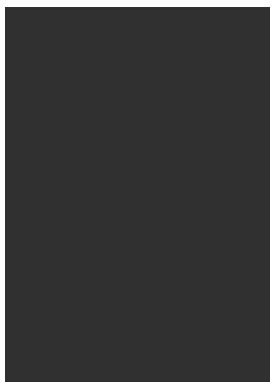
**W**  
HPL/SGL



Washed Oak | ES  
BC693

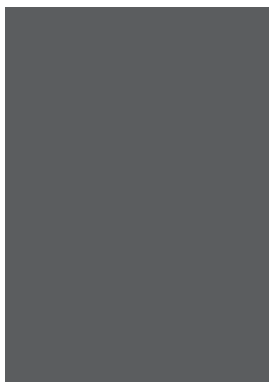
**W**  
HPL/SGL

## Liscio



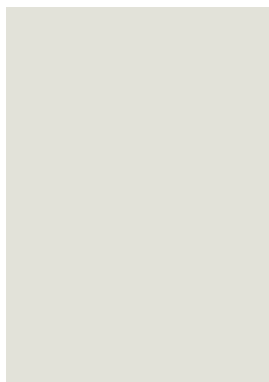
Nero | LS  
BC709

**W**



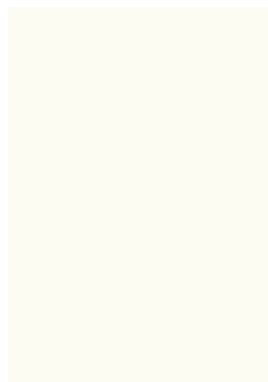
Carbone | LS  
BC737

**W**



Fuma | LS  
BC762

**W**



Bianca | LS  
BC799

**W**

# AVAILABILITY

	SGL				HPL	LISCIO
Thickness	10mm – 3/8"	12.5mm – 1/2"			0.7mm – 0.028"	0.9mm – 0.035"
Metric sheet sizes (L x W) mm	3660 x 1530	2445 x 1850*	3660 x 1530	4900 x 1850*	3060 x 1240	3060 x 1220
Imperial sheet sizes (W x L) ft	5 x 12	6 x 8	5 x 12	6 x 16	4 x 10	4 x 10
Grade	FR as standard				FR as standard**	FR as standard**
Finish	ES				ES	LS

CODE	DECOR	AVAILABILITY					
<b>NEUTRALS</b>							
BC115	Arctic White		■	■	■	■	
BC129	Egyptian White	■	■	■	■	■	
BC142	Antique White		■	■	■	■	
BC153	Truffle		■	■	■	■	
<b>GREYS</b>							
BC223	Jet	■	■	■	■	■	
BC229	Graphite	■	■	■	■	■	
BC259	Elegant Grey		■	■	■	■	
BC264	Classic Grey	■	■	■	■	■	
BC278	Luna Grey		■	■	■	■	
<b>MINERALS</b>							
BC312	Andesite		■	■	■	■	
BC342	Gabbro		■	■	■	■	
BC369	Diamond Quartz		■	■	■	■	
BC394	Alluminio		■	■	■	■	
<b>PRIMARYS</b>							
BC425	Azure		■	■	■	■	
BC442	Cobalt	■	■	■	■	■	
BC466	Crimson	■	■	■	■	■	
BC469	Orange		■	■	■	■	
BC478	Tropical	■	■	■	■	■	
BC499	Lime	■	■	■	■	■	
<b>PASTELS</b>							
BC501	Carmine		■	■	■	■	
BC529	Ballerina		■	■	■	■	
BC551	Sage		■	■	■	■	
BC559	Atoll	■	■	■	■	■	
BC584	Sky		■	■	■	■	
<b>WOODS</b>							
BC620	Bog Oak		■	■	■	■	
BC627	Smoked Oak		■	■	■	■	
BC646	Royal Walnut		■	■	■	■	
BC670	English Oak	■	■	■	■	■	
BC688	Country Oak		■	■	■	■	
BC690	Sawn Maple		■	■	■	■	
BC693	Washed Oak		■	■	■	■	
<b>LISCIO</b>							
BC709	Nero						■
BC737	Carbone						■
BC762	Fuma						■
BC799	Bianca						■

Other sheet sizes are available to order. If you require FR please state this when ordering HPL and Liscio. When ordering FSC® certified materials please ensure this is requested on your purchase order as availability on FSC® certified material may vary.

\*A few decors are supplied with an 1830mm width due to current available paper size, please contact us for clarification.

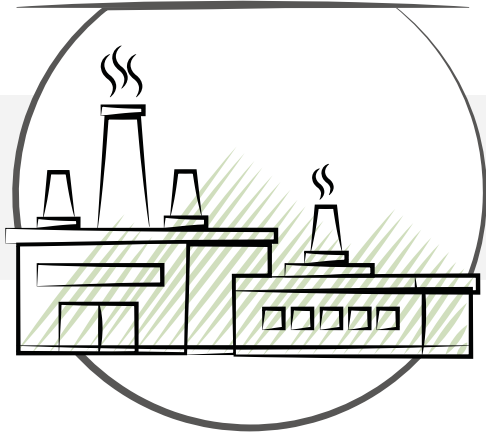
Sheets sizes may be marginally larger than those listed, but will be no smaller than the published sheet sizes and their specific tolerances.

\*\* Fire Retardant Grade (FR) for HPL and Liscio - To achieve certificated composite Fire Performance the selection of FR grade laminate, FR grade core material including appropriate adhesive and bonding system must be carefully considered. For further advice please speak to our technical team.

# OUR CARBON NEUTRAL FOOTPRINT

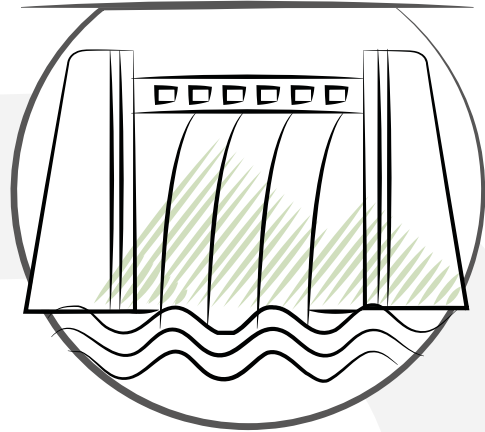
## 1. Manufacturing Processes

A focus on improving sustainability within our processes



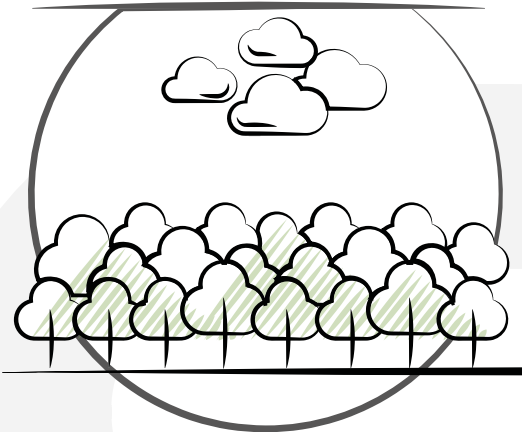
## 2. Energy Sources

Benefits of hydroelectric energy



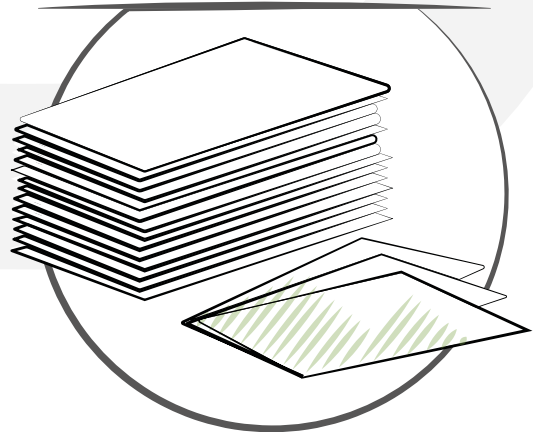
## 4. Carbon Offsetting

200 hectares of reforestation helps to absorb 440 tonnes of CO<sub>2</sub> per year



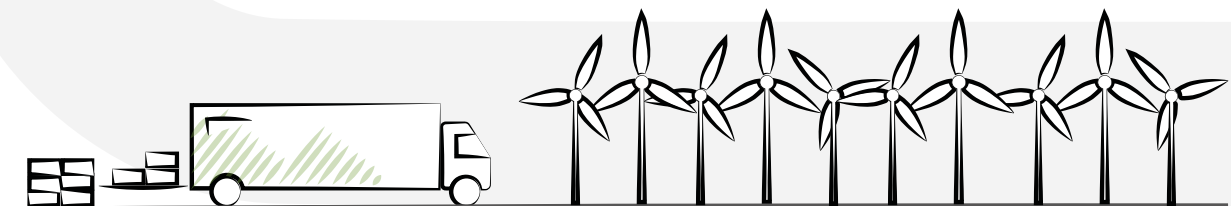
## 3. Materials

Continually focused on using renewable materials



## 5. Freight and Distribution

Investing in wind power



BioCarbon Laminates are Carbon Neutral supported by EcoAct

**ecoact**

# BIOCARBON<sup>®</sup> LAMINATES

• BREATHING SUSTAINABILITY •



To order samples please contact our UK Distributor  
Performance Panels Ltd.

+44 (0) 1422 310319

info@performance-panels.co.uk

www.performance-panels.co.uk

[www.biocarbonlaminates.com](http://www.biocarbonlaminates.com)



The mark of  
responsible forestry

